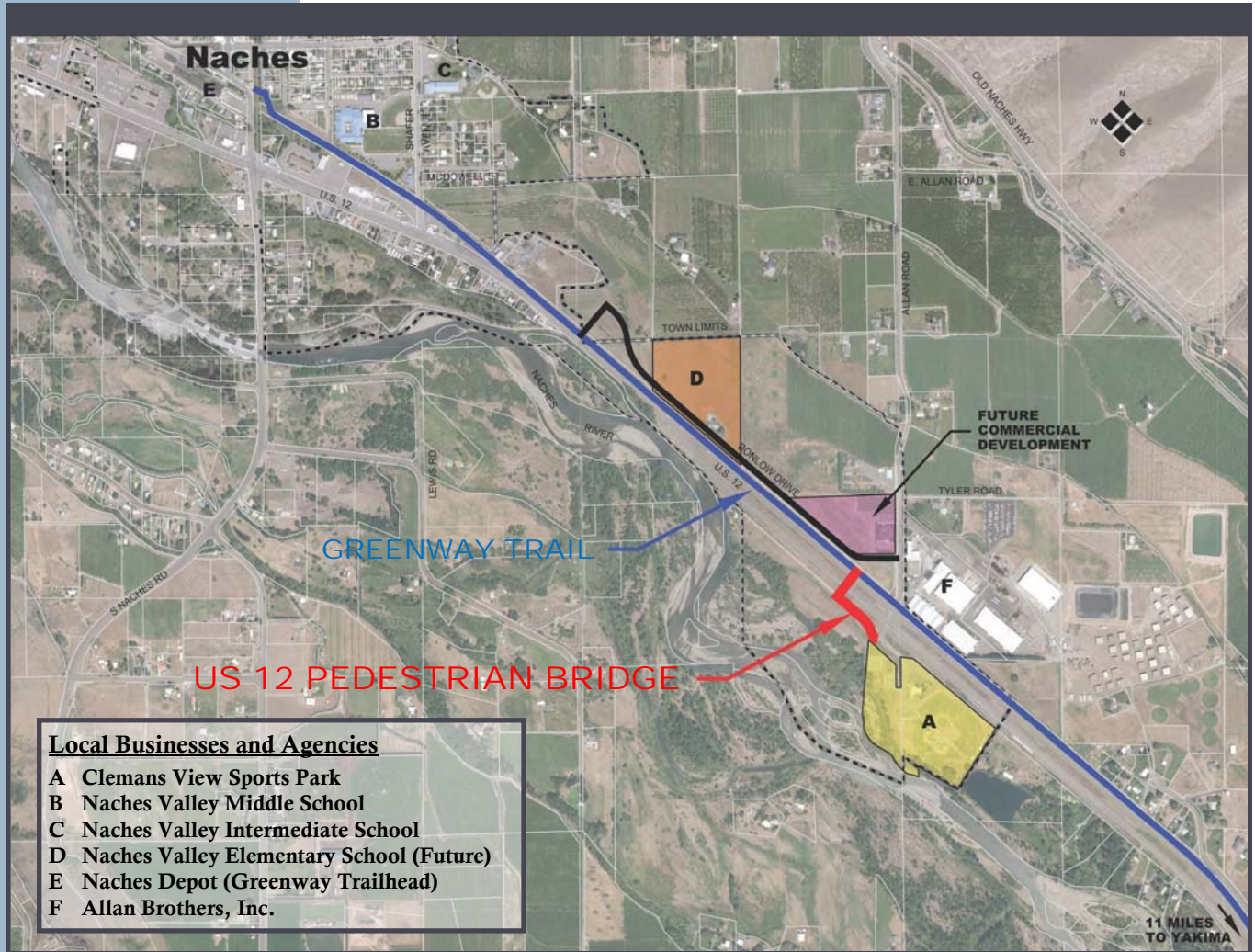




Town of Naches

US 12 Pedestrian Bridge



Local Businesses and Agencies

- A Clemans View Sports Park
- B Naches Valley Middle School
- C Naches Valley Intermediate School
- D Naches Valley Elementary School (Future)
- E Naches Depot (Greenway Trailhead)
- F Allan Brothers, Inc.

US 12 Pedestrian Bridge Information/Benefits

- **Promotes wellness** by encouraging walking and bicycling
- Establishes foot network for **Yakima Valley** recreationists
 - Greenway connects Naches, Selah, Yakima, and Union Gap
- Provides **safe biking and walking** transportation options to Naches activity centers
 - Downtown, Schools, Park, and Depot
- **Gateway** to White Pass and Chinook Scenic Byways
- Project includes constructing new pedestrian bridge over US 12 and asphalt pathway to Clemans View Sports Park
- Preliminary design complete
- US 12 **at-grade pedestrian crossing rejected** for safety concerns
 - US 12 — 60 mph speed limit with 11,000 vehicles per day
 - 300 pedestrians crossing daily
- Endorsed by surrounding businesses through Wellness Programs

TOWN OF NACHES

29 E. 2nd St.
Naches, 98937

Phone: 509-653-2647

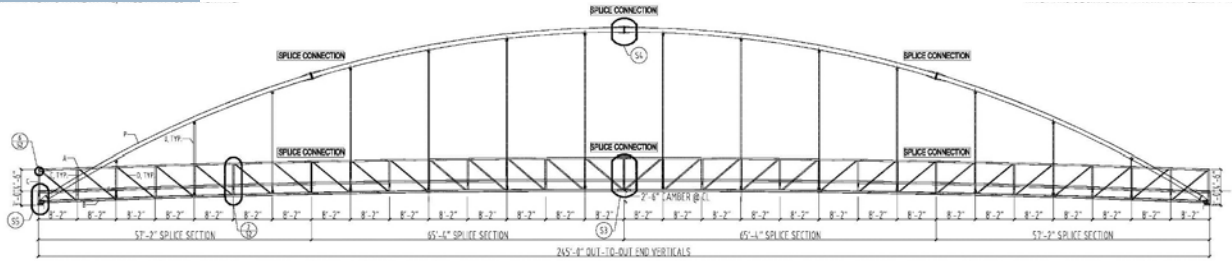
Fax: 509-653-2732

Email:

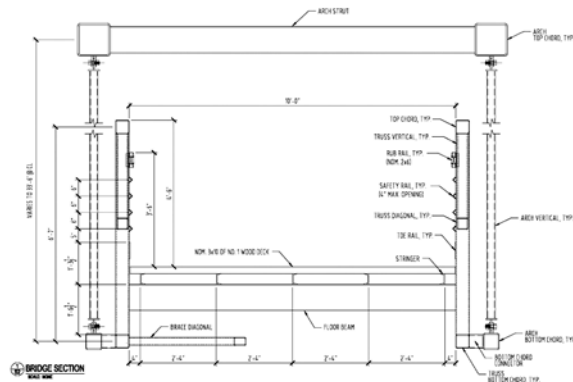
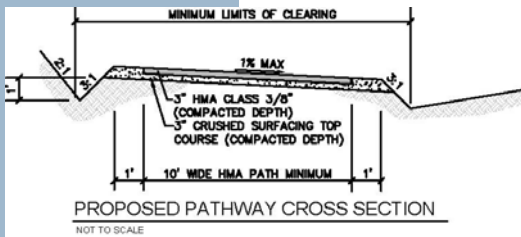
Jeff.Ranger@co.yakima.wa.us

Jeff Ranger,

Town Administrator



VERTICAL TRUSS ELEVATION
NO SCALE



Local Participants and Supporters:

- Washington State Department of Transportation (WSDOT)
- Yakima Valley Conference of Governments (YVCOG)
- Yakima County
- Naches Valley School District
- Yakima Greenway Foundation
- White Pass Byway and Chinook Scenic Byway
- Surrounding Businesses

